

## LETTER FROM THE DIRECTOR



Aloha Common Grace 'ohana,  
We hope you and your family are staying safe. The pandemic is affecting the way we are able to relate to children, but we are doing all we can. Currently, we are reviewing and revising our policies and procedures to keep our keiki and staff safe throughout the school year. We are also building

a curriculum that can accommodate online or face-to-face training and mentoring, based on the effects of the pandemic. This summer, we checked on our in-need families and provided them resources such as school supplies, hand sanitizers, protective masks and general information such as food bank pick-ups and hotlines. With schools most likely going online in the first quarter, it's vital to reach the kids. These keiki are even more isolated at home and the need for one-on-one attention is greater. Providing mentors is critical. We need your help to continue fostering relationships between mentors and mentees.



give aloha

For the month of September, Foodland stores are offering the "Give Aloha" Campaign, in which they will partially

match donations for their customer's nonprofit of choice. Go to any Foodland, Foodland Farms or Sack N Save and give the code 78587 at checkout! Matching campaigns contribute to almost 40% of our yearly finances. We appreciate your support in our mission of helping keiki during this difficult time.

Keeping you in my prayers,

*Aries Jackson*

Aries Jackson | Executive Director

P.S. The Give Aloha Campaign ends on September 30th. Please donate to "Common Grace" which is the name registered as a 501(c)3. Our federal ID tax # is 30-0110074. Mahalo!

## SCHOOLS SERVED



**37 ELEMENTARY SCHOOLS**

### HONOLULU

Ala Wai  
Ali'iolani  
Ka'ahumanu  
Kalihi  
Kalihi-Waena  
Kuhio  
Liholiho  
Likelike  
Lunalilo  
Ma'ema'e  
Manoa  
Palolo  
Royal  
Waialae  
Waikiki  
Wilson

### CENTRAL

'Aiea  
Kipapa  
Mililani 'Ike  
Mililani Waena  
Waialua

### LEEWARD

August Ahrens  
Kapolei  
Lehua  
Palisades  
Pearl City Highlands  
Waiau  
Waipahu

### WINDWARD

Ahuimanu  
'Aikahi  
Ben Parker  
Kailua  
Keolu  
Maunawili  
Kainalu  
Pu'ohala

### KAUA'I

Kapa'a



**9 HIGH SCHOOLS**

### HONOLULU

Farrington  
Kaimuki Christian  
Kaimuki  
Kalani

### LEEWARD

Waipahu

### CENTRAL

'Aiea

### WINDWARD

Castle  
Kailua  
Kalaheo



Above: Emily Ishikawa and Keiki 4 Keiki staff drop off supplies to Aiea Elementary School, in which 100% of students qualify for Title 1 benefits.

## MENTEE/MENTOR IMPACT

### MENTEE IMPACT

- 95%** of mentees feel happy with their mentors
- 96%** of mentees enjoy spending time with their mentors

### MENTOR IMPACT

- 97%** of mentors feel like they are better listeners
- 96%** of mentors learned to be more patient

### "IN THEIR WORDS"

We have a lot in common. I can open up to her and she can open up to me. – ANONYMOUS, MENTEE

Mentoring is one of the most important things I could do for a child during this time. We need someone in our life who guides us and gives us a sense of direction when we feel lost. – MEGAN, MENTOR

I feel like it's a good social connection, because I think it actively promotes inclusiveness and respect. – TERRI, PARENT

## PLEASE GIVE WE'RE HELPING KIDS

Mental health problems affect one in six children, and rates go up during community crisis like COVID-19. One of the strongest factors in protecting a child from these negative outcomes is a healthy relationship with at least one supportive, caring adult they can count on for protection and comfort and who will help keep life predictable. Mentoring offers powerful protection against the pandemic's harmful effects.

### VIRTUAL MENTORING

We kept our mentors and mentees in touch throughout the stay-at-home order. Starting in April, mentors and mentees met virtually.

### SOMEBUDDY CARES

To provide social and emotional support to our keiki, especially after an entire quarter spent in lockdown, we extended our mentorship services into the summer. Mentors met safely with children once-a-week from June to July.

### ALL-STARs

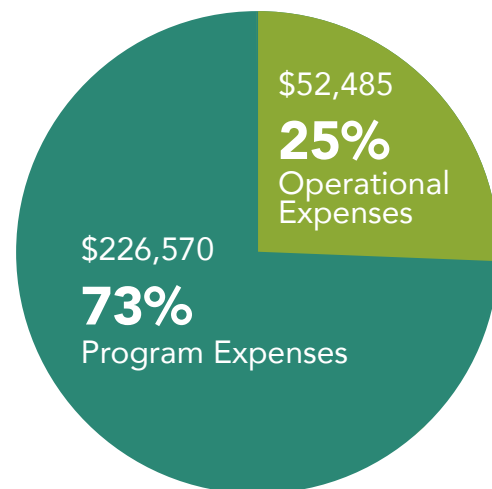
We want to continue to equip our mentors for next school year. High achieving mentors from each of our 9 partnering high schools have been chosen to receive career development training. We safely held two of these training sessions this summer.

### SCHOOL SUPPLY DRIVE

COVID-19 has brought additional financial strain on many of our keiki's families. To alleviate some of this financial stress, we raised over \$3,700 to purchase school supplies for our partner elementary schools.

"Common Grace" 501(c)3. Federal ID tax # is 30-0110074.

## COST AT A GLANCE



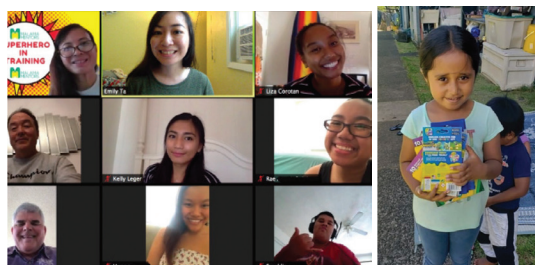
**Below:** A summer SomeBuddy Cares mentor finds a safe but fun way to spend time with his mentee at the beach shooting water guns.



**Below:** Our first ever Mālama Mentors All Star Workshop! Outstanding mentors learned how to speak professionally in the workplace.



**Bottom left:** Our second online Mālama Mentors All Star Workshop focused on addressing personal talents and career goals.



**Top right:** This girl from Pālolo Valley is holding new markers and crayons she's received from our school supply drive. **We raised almost \$4,000!** Thank you!

MAHALO TO: **HOUSE OF Photography INC.**